



---

**Atlanta BeltLine: Development Oriented Transit**  
**Brian Leary, President & CEO, Atlanta BeltLine, Inc.**

**Development-Oriented Transit: Innovative Economic Tools and Models**  
**February 4, 2012**

**2012 New Partners for Smart Growth:**  
**Building Safe, Healthy and Livable Communities**

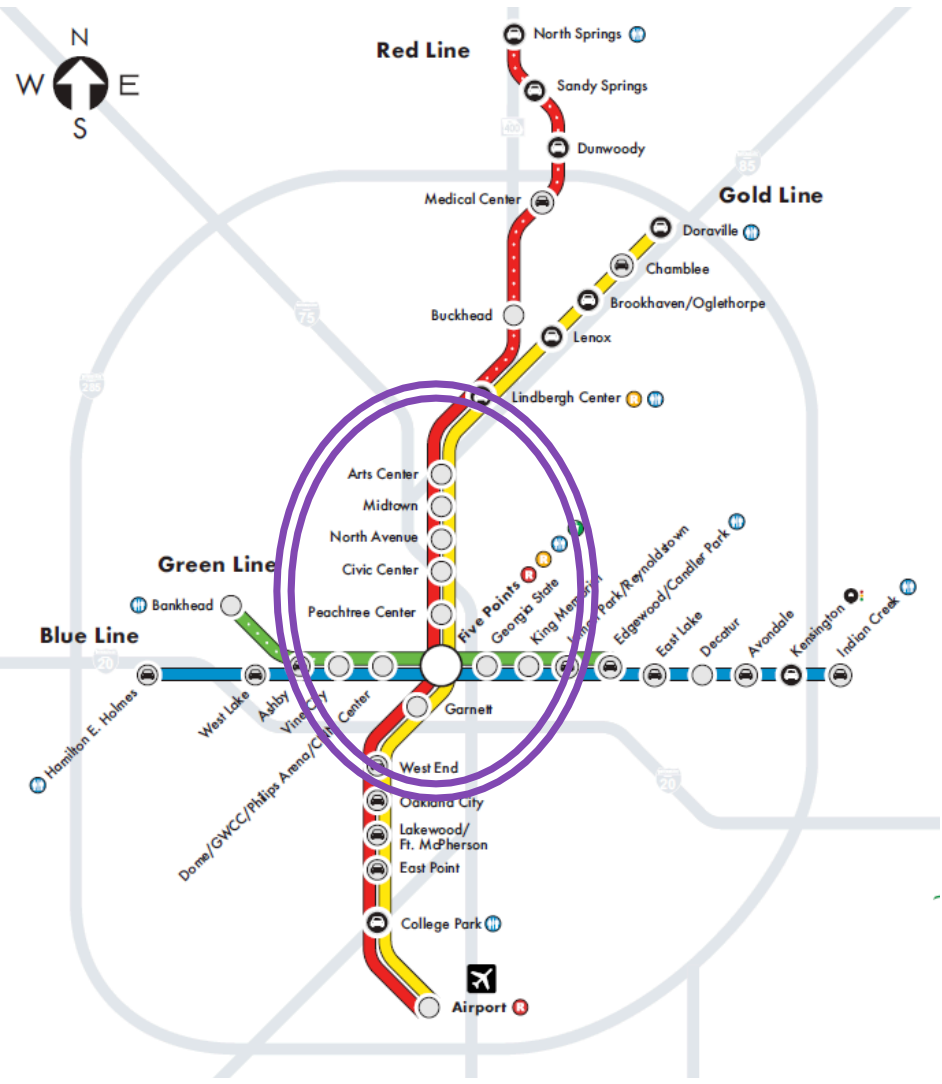
## Atlanta BeltLine: Development Oriented Transit



## History & Context

### Providing Region with Needed Connectivity

The Atlanta Beltline is in the heart of the Atlanta region & utilizes historic freight rail ROW circling the City.



# History & Context

## Four Belt Lines

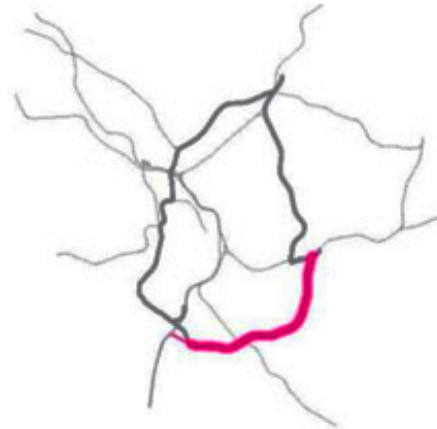
---



SEABOARD AIR LINE  
BELT RAILROAD:



ATLANTA & RICHMOND  
AIR LINE RAILWAY:



ATLANTA & WEST POINT  
BELT LINE:

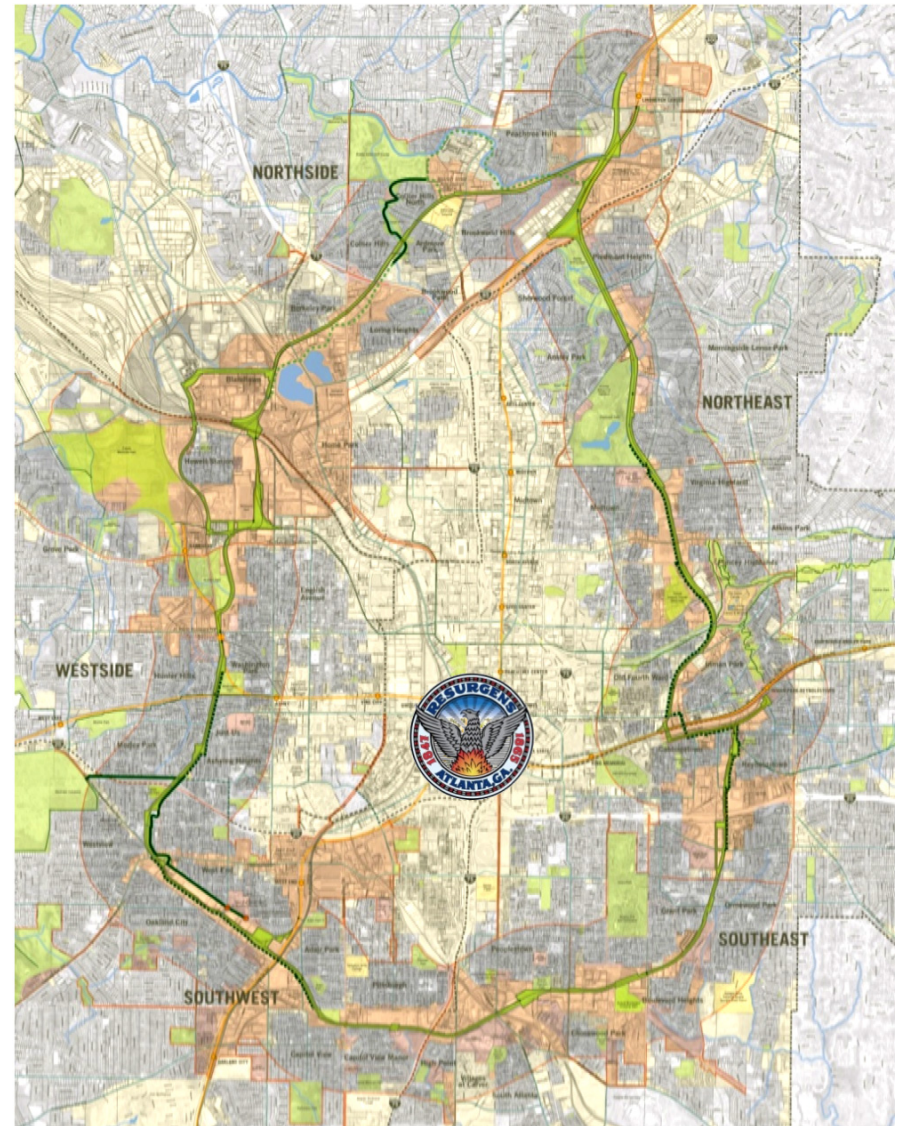


LOUISVILLE & NASHVILLE  
RAILROAD BELT:

## Location & Scale

### Significant Opportunity for Significant Impact

- Connects **45 neighborhoods**
- **22% of City of Atlanta population** lives in the Atlanta BeltLine planning area
- **19% of the City's land mass** is inside the Atlanta BeltLine redevelopment area
- **40% increase** in Atlanta's parkland
- **6,500 acre TAD**





# Comprehensive Concept Key Elements



**Transit**  
22-mile loop



**Parks**  
1300 + new acres



**Trails**  
33 miles



**Economic Development**  
20 areas, 30k jobs



**Affordable Housing**  
5,600 Units



**Historic Preservation**



**Public Art & Urban Design**



**Environmental Clean-up**  
1100 + acres



ATLANTA BELTLINE

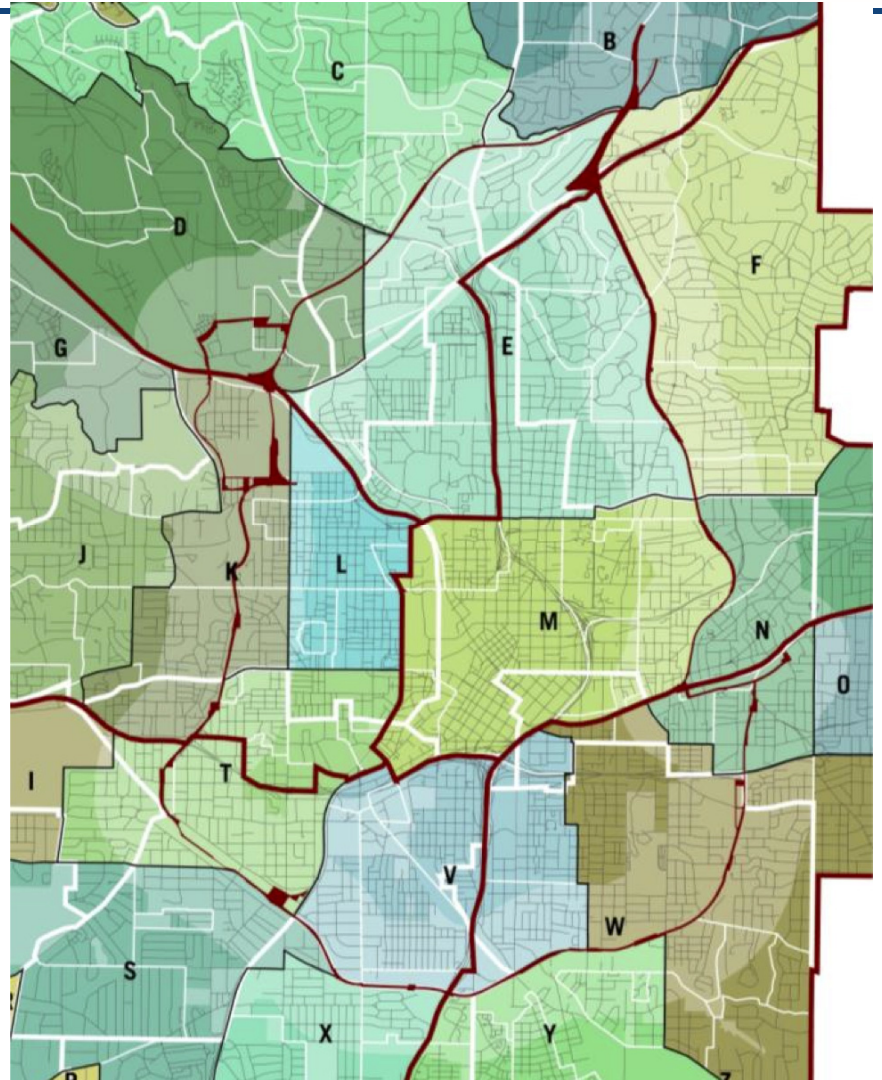




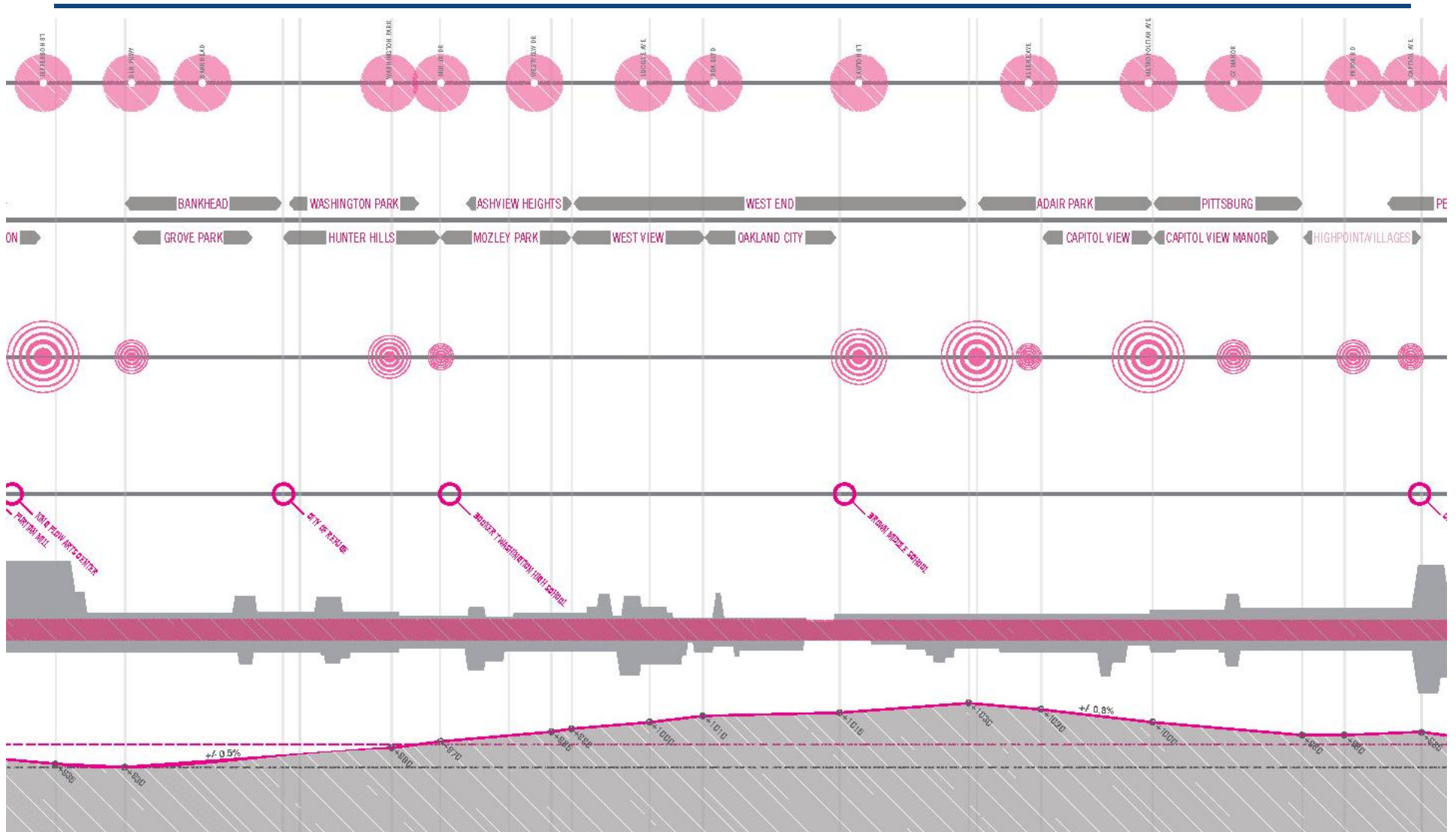


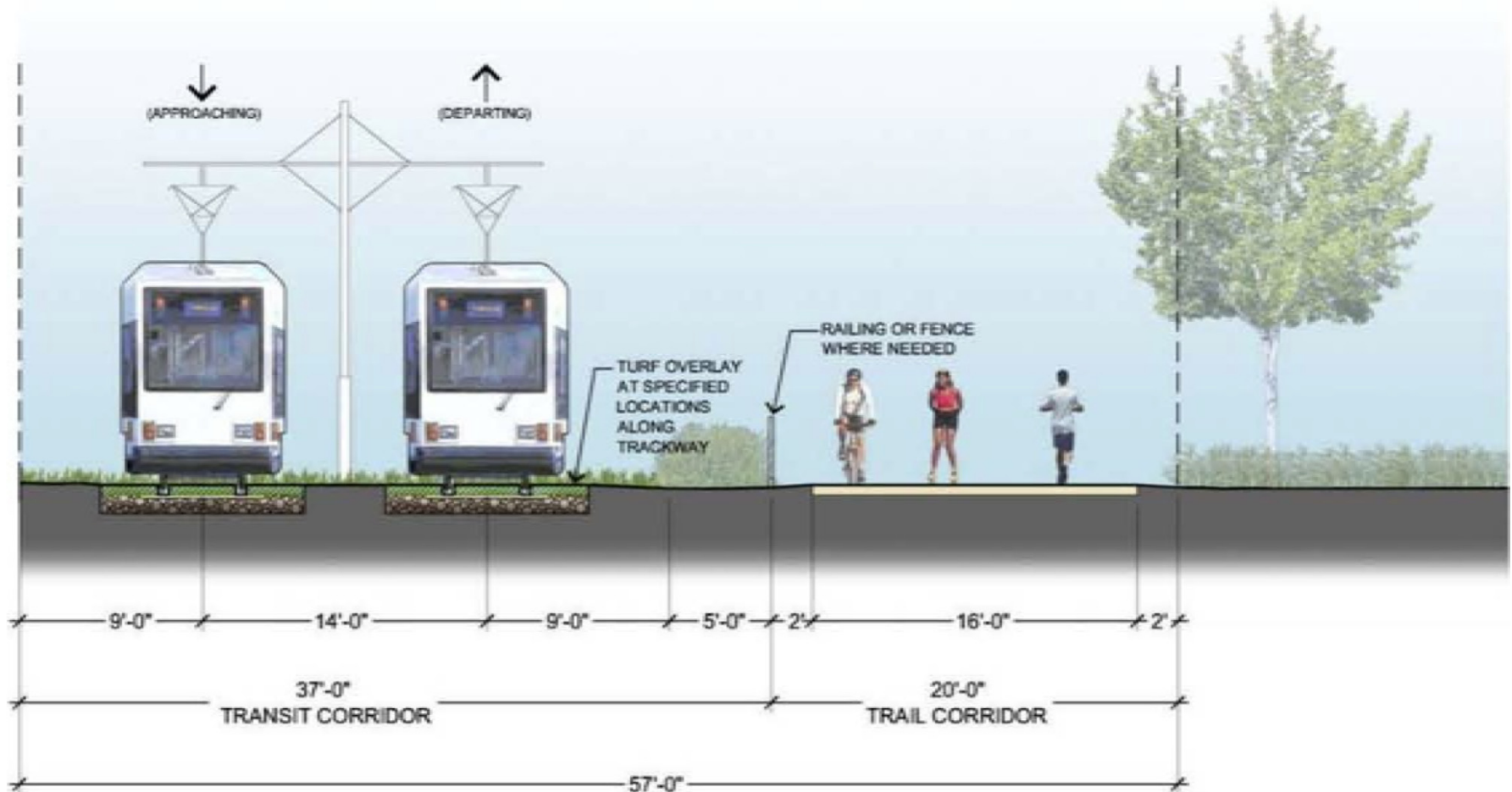
ATLANTA BELTLINE

## Political Context



# Existing Conditions





# Drawing



# Floor



## L7 GREEN GUIDEWAY

Low-growing, low-input, low-maintenance and drought tolerant grasses are recommended: Bermuda grass, Buffalo grass (native), and Zoysia grass.



## L2.2 TRANSIT + "DRY" FLOOR

With the introduction of transit, low-growing, sun tolerant grass species will replace the taller growing, warm season grasses within the guideway.



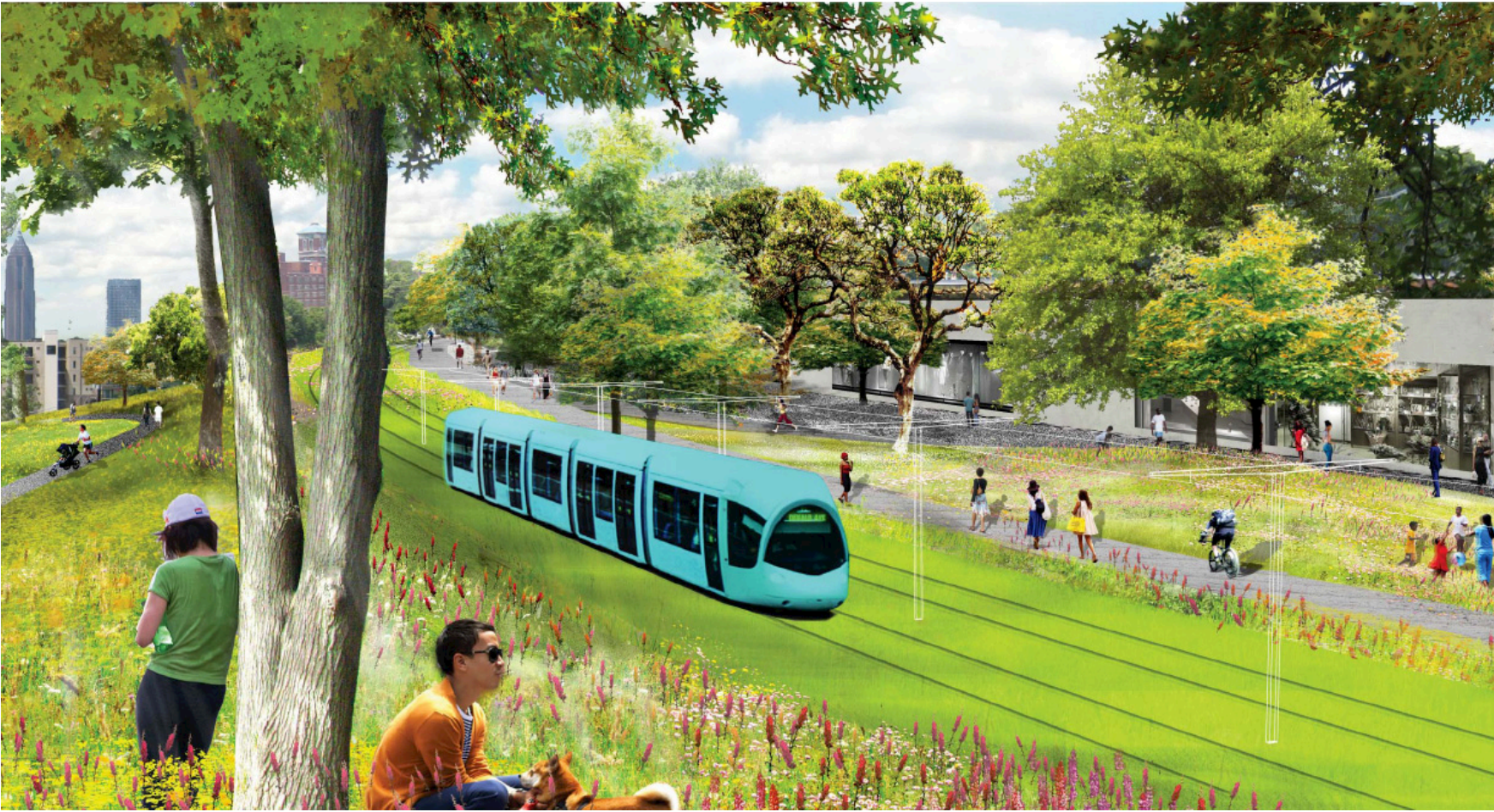
## L2.4 TRANSIT + "MOIST" FLOOR

With the introduction of transit, low-growing, shade tolerant grass species will replace the taller grasses and wetland emergents.









# ProgressReport

## Construction Update



### Under Construction:

- Eastside Trail



### Completed:

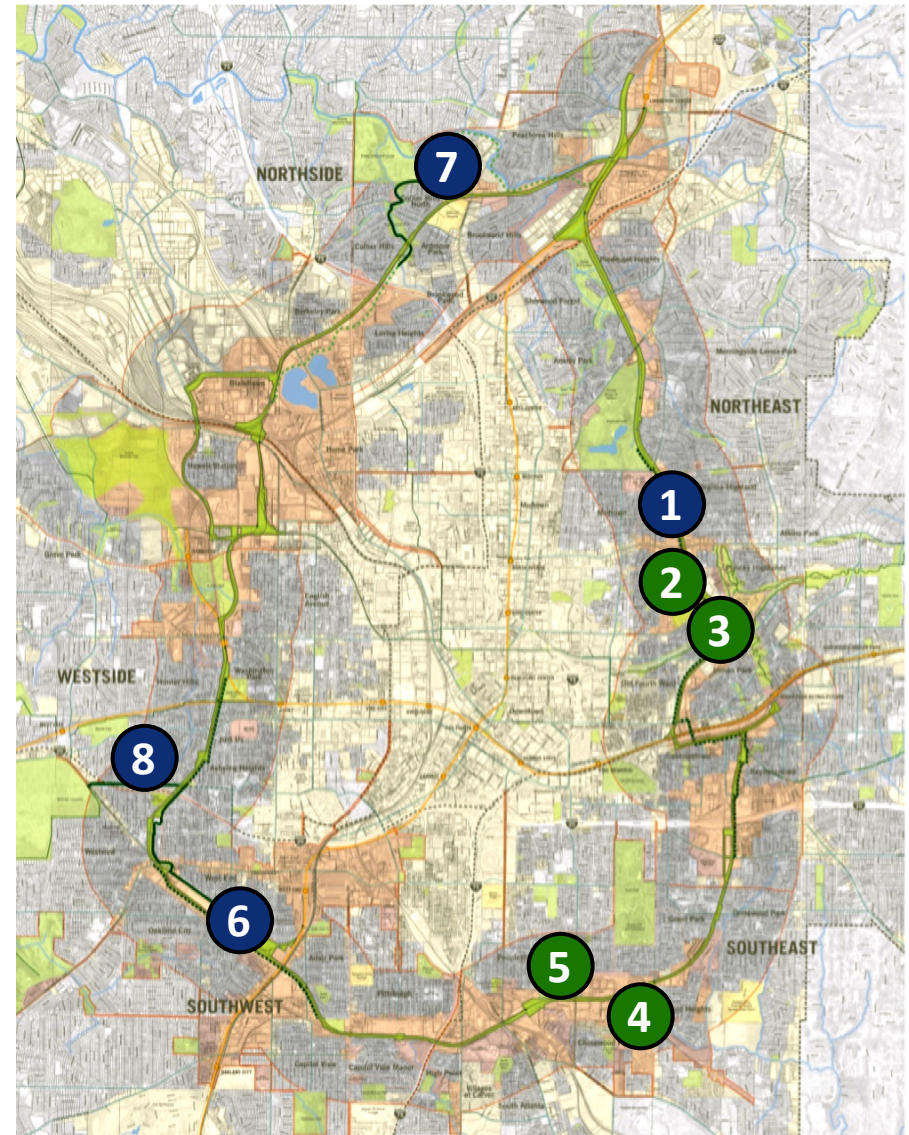
- Historic Fourth Ward Park
- Skate Park (Cox Parcel)
- Boulevard Crossing Park
- D.H. Stanton Park
- West End Trail Phase I (October 2008)
- Northside Trail Opened (April 2010)
- West End Trail Phase II (June 2010)



- Trails

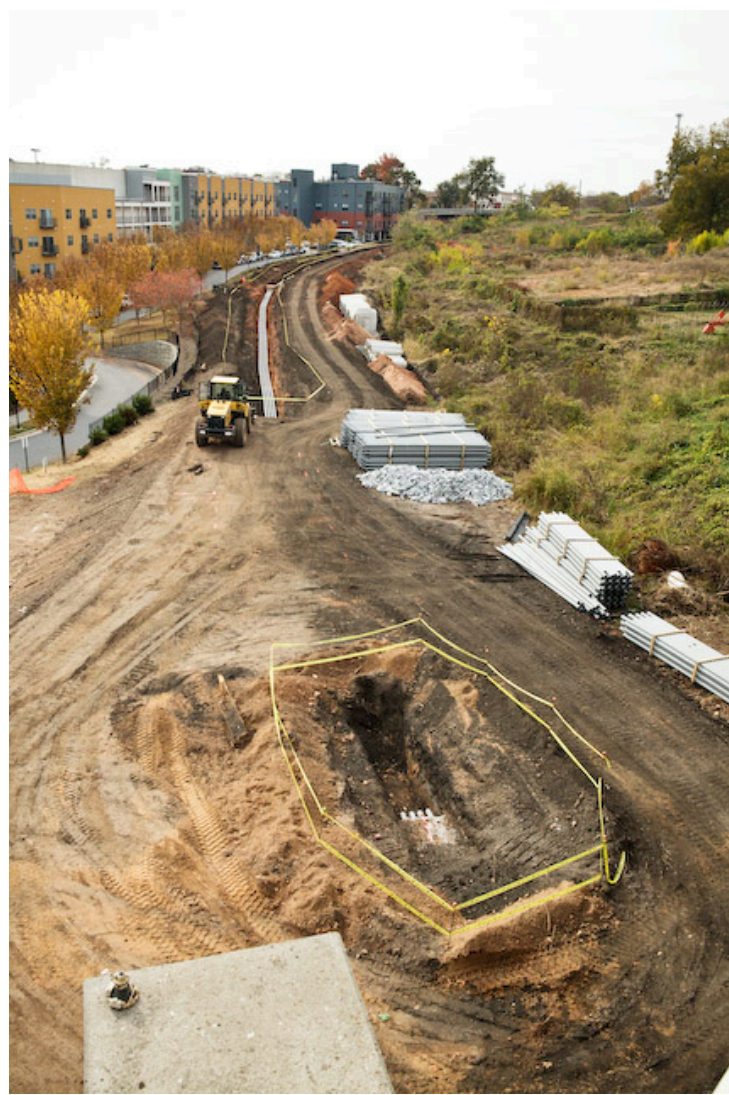


- Parks



# Progress Report

## Eastside Corridor Construction



# Progress Report

## Eastside Corridor Construction



## Atlanta BeltLine: Development Oriented Transit

